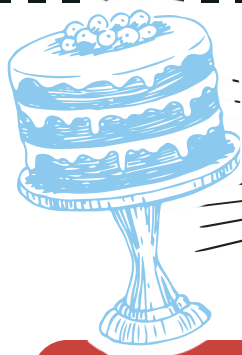




Read  
Me



# NIBBLE NIBBLE

## Chit Chat

### NEW YORK-STYLE CHEESECAKE

STRAWBERRY 7.95 | PLAIN 6.95

Creamy but not heavy! Light without falling apart as you take a forkful of rich flavor.  
Contains: eggs, milk, soy & wheat.

### LAYERED CARROT CAKE

Layers of moist carrot cake filled and topped with cream cheese icing.

Sprinkled with pecans & shards of fresh toasted coconut. 8.25

Contains: eggs, milk, soy, tree nuts & wheat.

### BIG FAT CHOCOLATE

Layers of moist dark chocolate cake filled with even more silky smooth chocolate.

Topped with chunks of cake. 8.25

Contains: eggs, milk, soy & wheat.

### GERMAN CHOCOLATE

Rich cake with a golden brown coconut filling & milk chocolate icing. Deliciously smothered in milk chocolate ganache and toasted pecans. 7.95

Contains: eggs, milk, soy, tree nuts & wheat.

### CONFETTI CAKE

Moist yellow cake with sprinkles, vanilla icing & topped with sprinkles. 7.95

Contains: eggs, milk, soy & wheat.

### CLASSIC SEVEN LAYER

Thin layers of moist yellow cake topped with decadent chocolate icing. 7.95

Contains: eggs, milk, soy & wheat.

### RED VELVET

Four layers stacked high spread with chocolate truffle filling. Filled & frosted with tangy cream cheese icing. 8.25

Contains: eggs, milk, soy & wheat.

### CHECKERBOARD CAKE

Cubed layers of moist yellow and chocolate cake topped with decadent chocolate and vanilla icing. 7.95

Contains: eggs, milk, soy & wheat.



## MILK SHAKES

VANILLA 9.00

OREO BLAST 10.00

NUTELLA 10.00

CHOCOLATE 9.00

FROOT LOOP 10.00

PEANUT BUTTER 10.00

STRAWBERRY 9.00

RED VELVET 10.00

COOKIE MONSTER 10.00

FOOD ALLERGY NOTICE: PLEASE BE ADVISED THAT FOOD PREPARED IN OUR FACILITY MAY CONTAIN THESE INGREDIENTS: MILK, EGGS, WHEAT, SOYBEAN, PEANUTS & TREE NUTS.

# Pies

## KEY LIME 6.95

Creamy, tarty & refreshing! Baked on a granola crust. Topped with fresh strawberries, blueberries & raspberry sauce.

Contains: Egg, Milk, Soy, Tree nuts (almonds) & Wheat.

## PEANUT BUTTER 7.95

Soft dark chocolate & peanut butter mousse full of Reese's® Peanut Butter Cups.

Served with a scoop of vanilla ice cream.

Contains: Egg, Milk, Peanut, Soy & Wheat.

## OREO 7.95

An OREO® cookie party on your plate! White 'n milk chocolate cream & OREO® chunks covered with dark chocolate drizzle. Served with a scoop of vanilla ice cream.

Contains: Egg, Milk, Soy, Tree nuts & Wheat.

## LEMON MERINGUE 6.95

Lemon custard filling topped with fluffy meringue baked on a pie crust.

Contains: Egg, Milk, Peanut, Soy & Wheat.

## ASSORTED FRUIT PIES 5.95

Your choice of apple, blueberry or cherry pie!

## HOT DRINKS

COFFEE 2.95

ESPRESSO 3.75

DOUBLE ESPRESSO 4.95

CAPPUCCINO 6.25

LATTE 6.25

HOT CHOCOLATE 4.25

TEA 2.95

HERBAL TEA 4.95

## OTHER

## Sweet Treats

SOFT BAKED TOLL HOUSE

CHOCOLATE CHIP COOKIE 3.95

FUDGE BROWNIE BAR 4.50

CREAMY RICE PUDDING 4.75

JELLO 3.95

## ICE CREAM

ONE SCOOP 2.95 • TWO SCOOPS 5.25

VANILLA • STRAWBERRY

CHOCOLATE • COOKIES N' CREAM

RED VELVET

ASK ABOUT OUR SPECIAL FLAVORS

## SUNDAES

### BROWNIE SUNDAE 11.95

Fudge brownie topped with two scoops of vanilla ice cream, warm chocolate syrup, chopped nuts, whipped cream & a cherry on top!

### MONKEY BUSINESS 13.95

Fresh ripe banana topped with three scoops of ice cream (vanilla, strawberry & chocolate), strawberries, chocolate sauce, whipped cream, chopped nuts, semi-sweet dark chocolate pieces & a cherry on top!

FOOD ALLERGY NOTICE: PLEASE BE ADVISED THAT FOOD PREPARED IN OUR FACILITY MAY CONTAIN THESE INGREDIENTS: MILK, EGGS, WHEAT, SOYBEAN, PEANUTS & TREE NUTS.

